



PRODIGEOLGY

Derek Buster

CEO



We advise partners on capital investment strategies utilizing the best energy data from the best resources!

BUSINESS PARTNERS



Derek Buster
Chief Geoscientist

Previous 25 Years

- Murphy Oil Corporation
- Ensign Natural Resources
- Guidon Energy
- Swallowtail Royalties
- Stone Energy Corporation
- Apache Corporation
- Baker Hughes
- Schlumberger Limited



Melissa Buster
Business Manager

Previous 30 Years

- Gun Smoke Customs, LLC
- Selman & Associates
- Roanoke ATA
- Front Office Business Solutions
- Wiesner Auto Group
- AutoNation

Scan QR code to
ProdiGeology.com

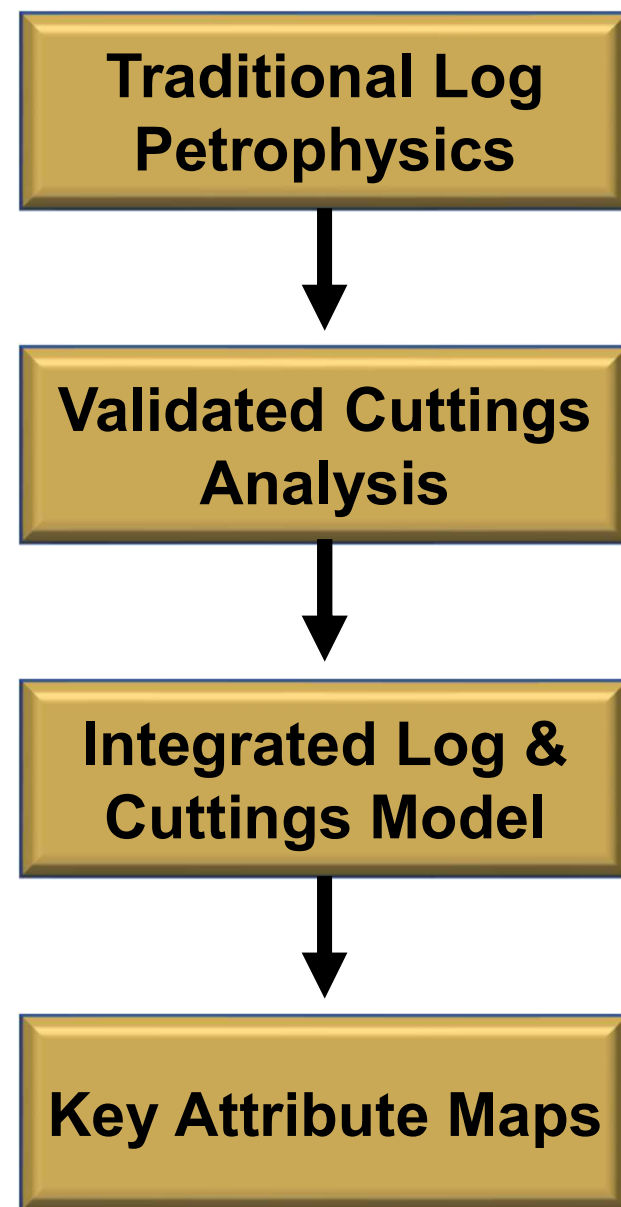




Operators, Banks, and Investors need:

- The best subsurface data aggregator that feeds into their Acquisition & Divestment land strategy.
- “Ground Truth” subsurface data products that works with production analytics.
- Cost-effective laboratory generated treasure maps that tie with reservoir engineering predictions.
- Accurate information that increases their reservoir intelligence and expands their investment opportunities.

WHAT DOES THIS DATA LOOK LIKE?

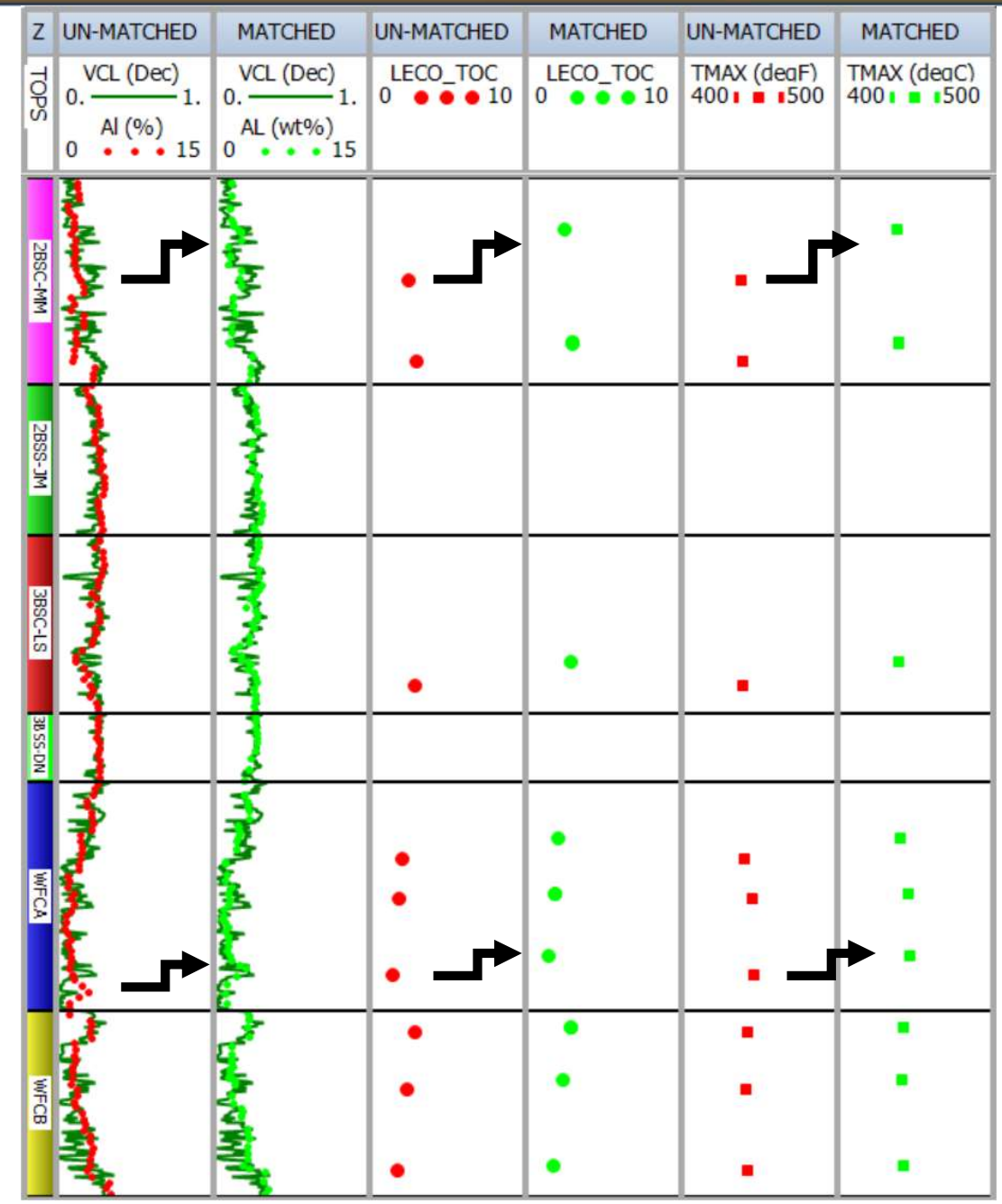
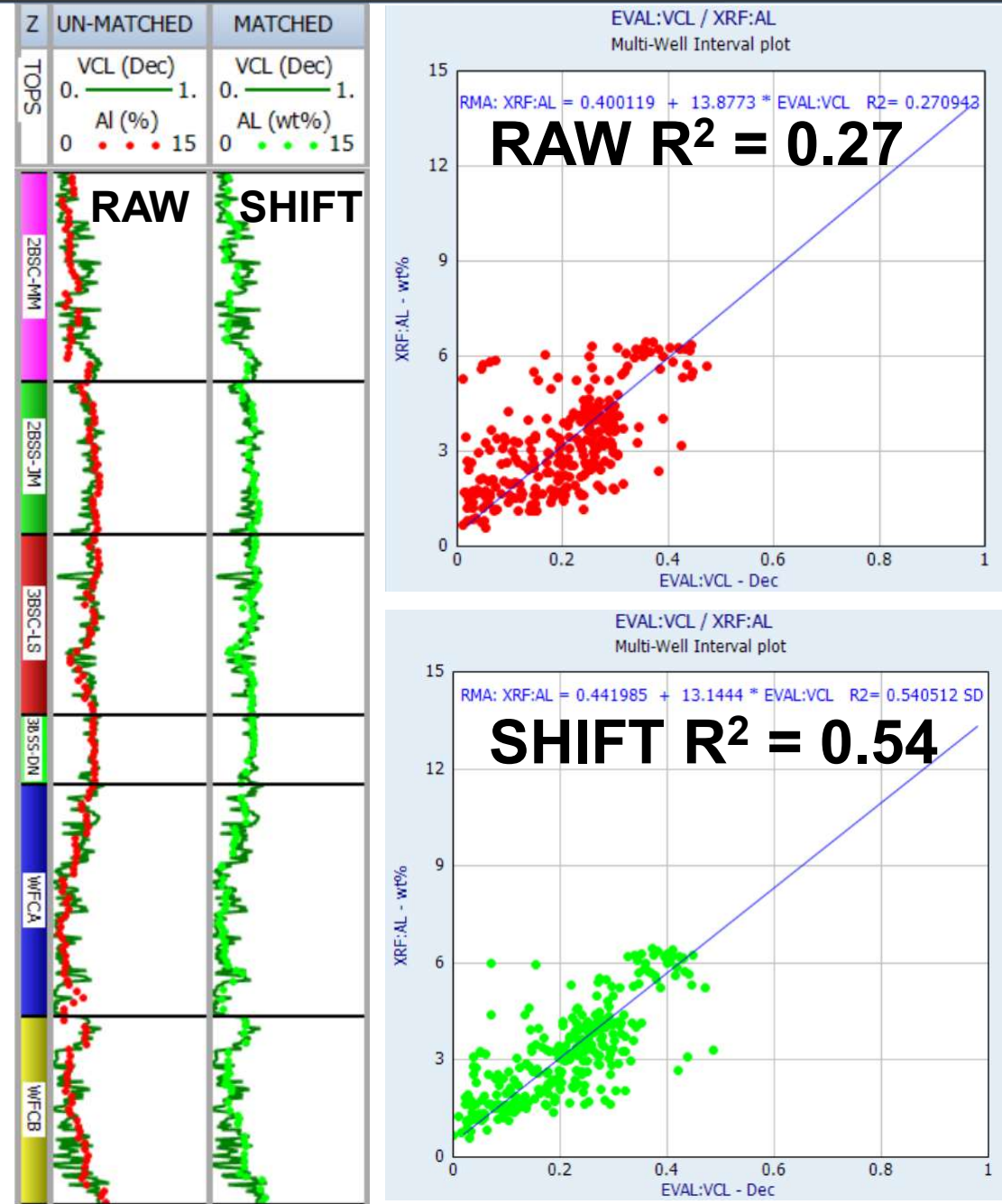


DATA VALIDATION



Drill Cuttings Quality Control Process

Depth Corrections Applied To All Samples



MODEL WORKFLOW



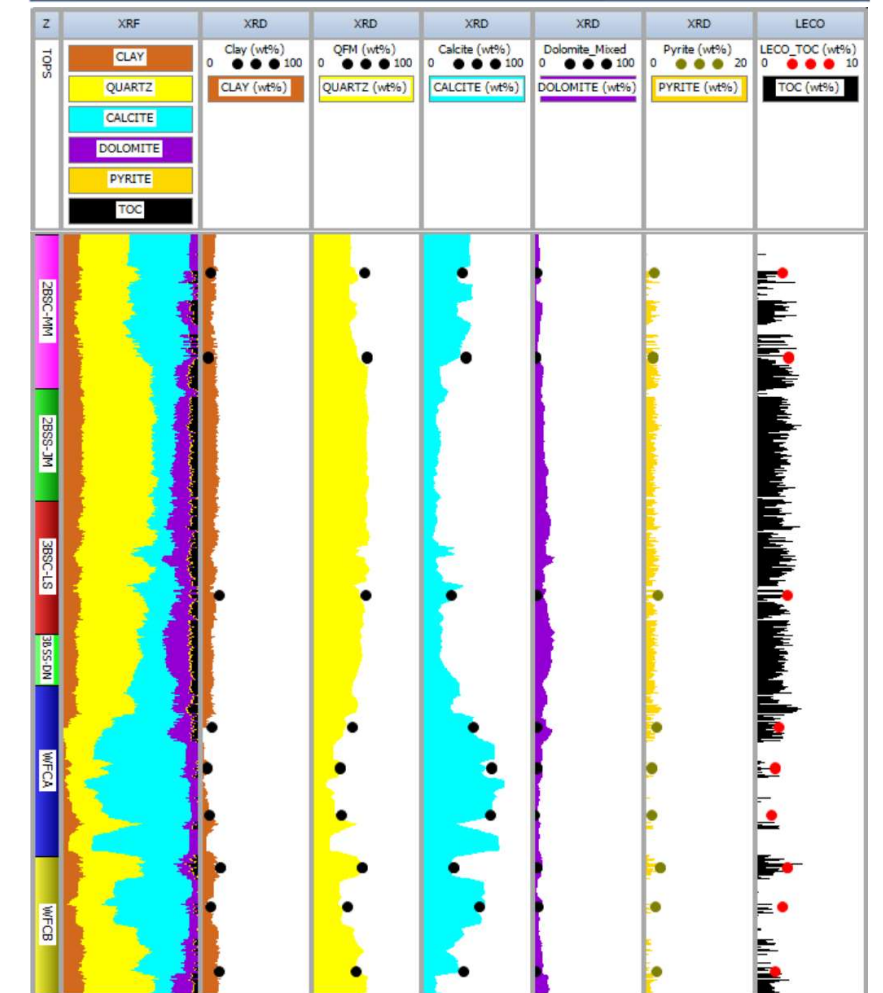
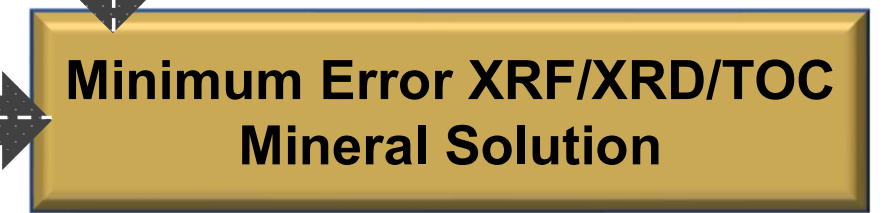
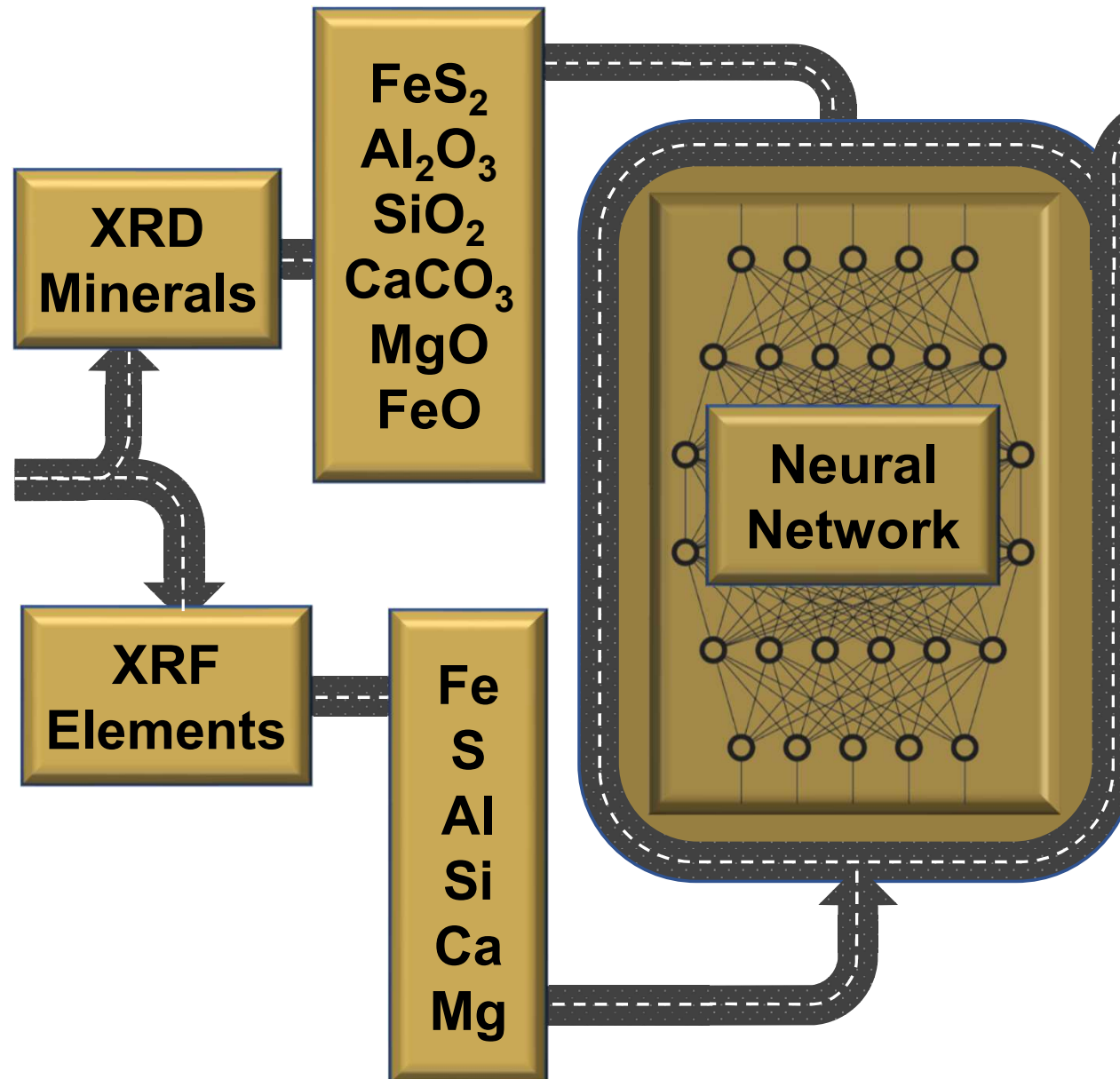
Organic Geochemistry

- Total organic carbon
- Programmed pyrolysis TMax

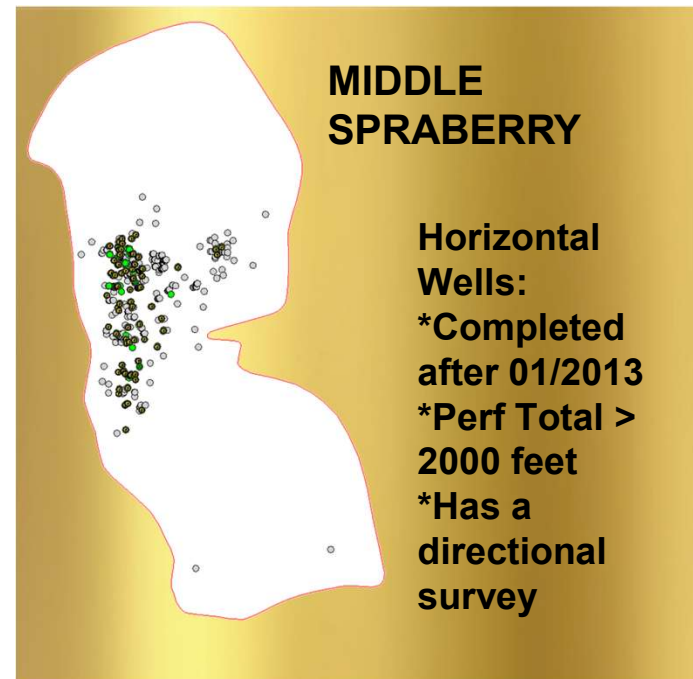
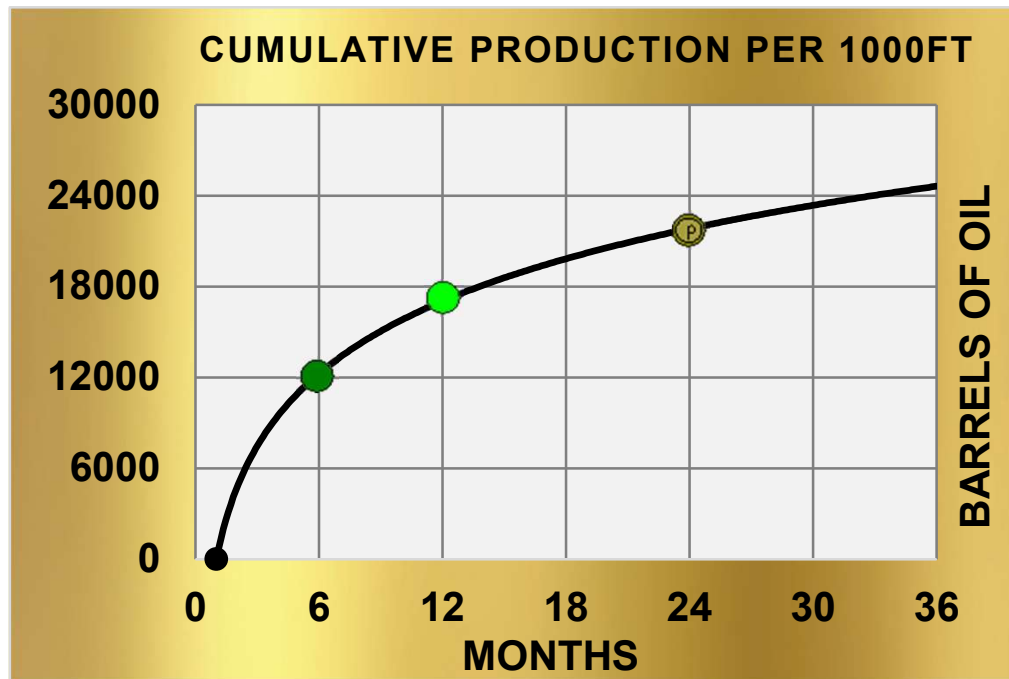


Inorganic Elemental & Mineralogy Analyses

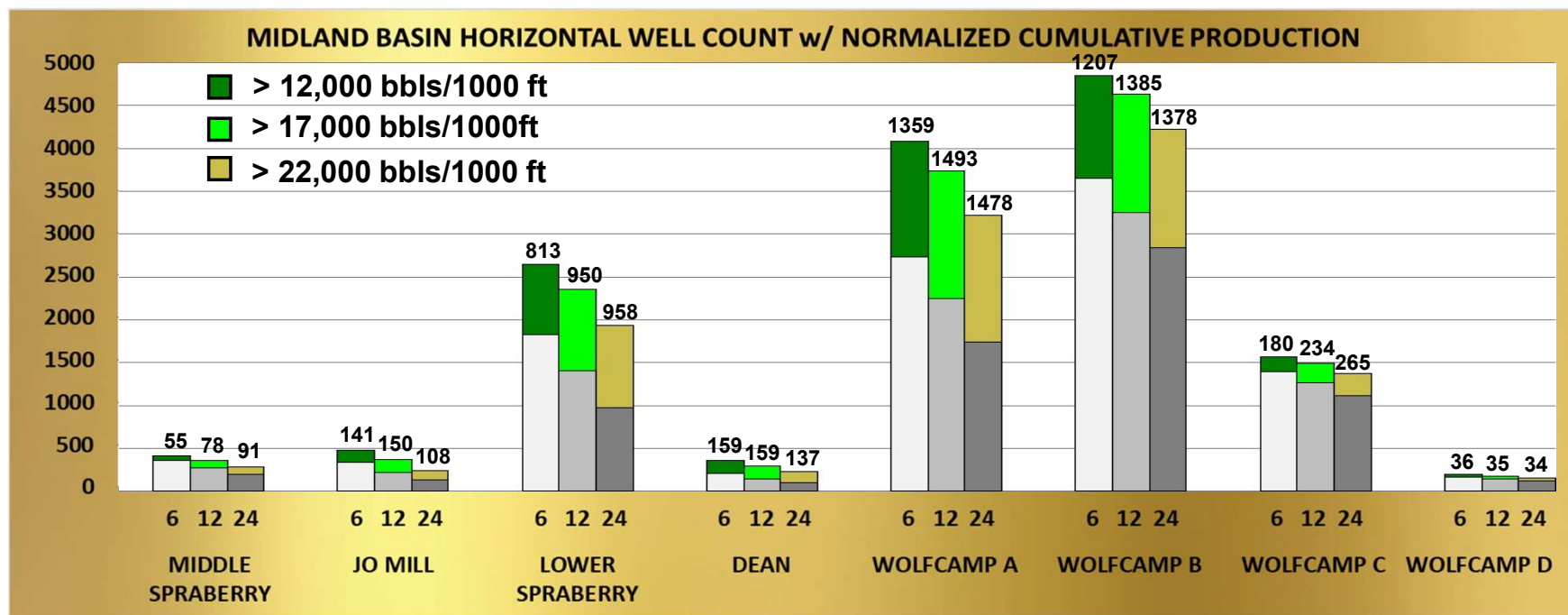
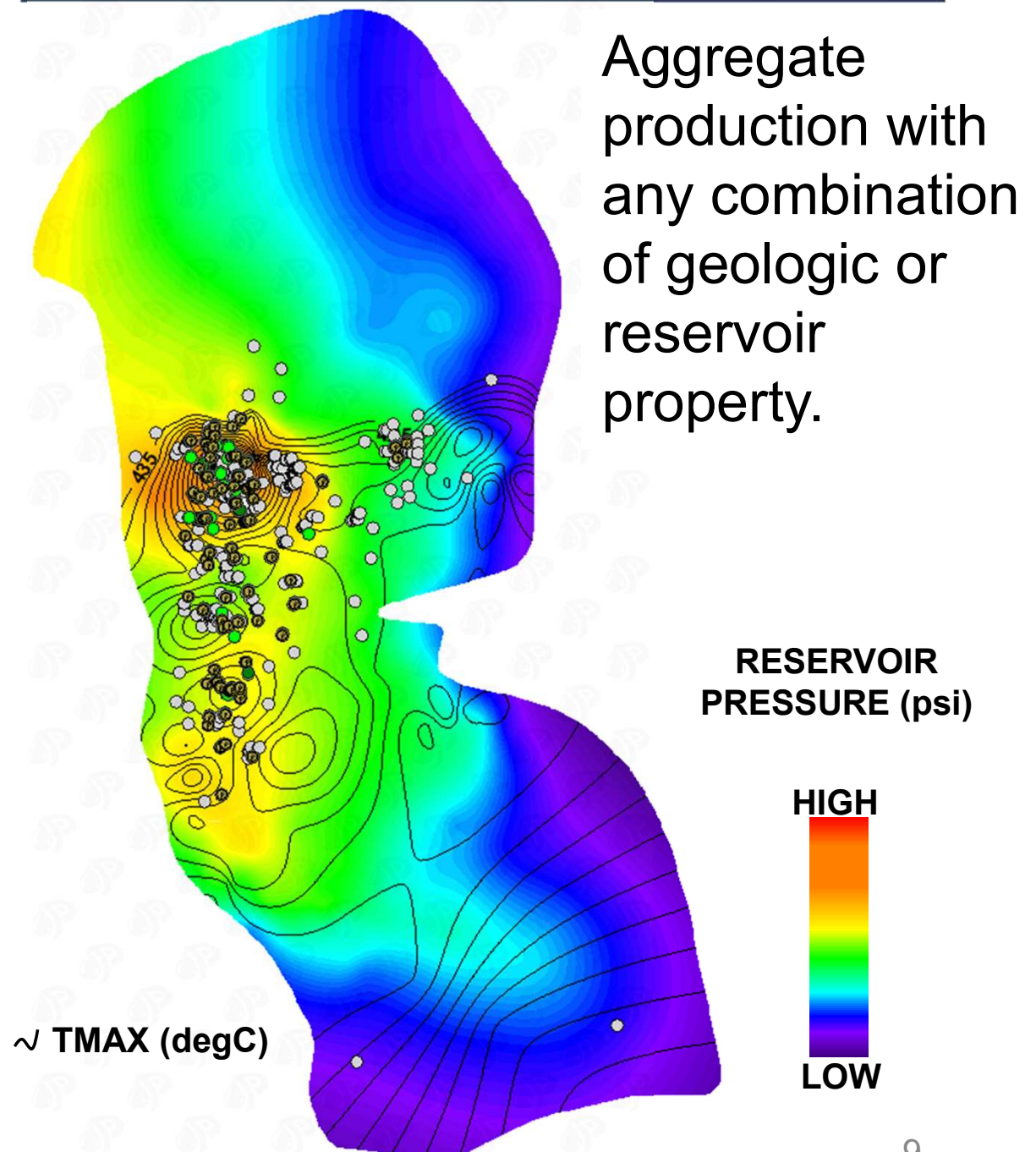
- X-ray Fluorescence
- Bulk mineralogy & clay Speciation from X-ray Diffraction



PRODUCTION + GEOLOGY



Geologic Property w/Production



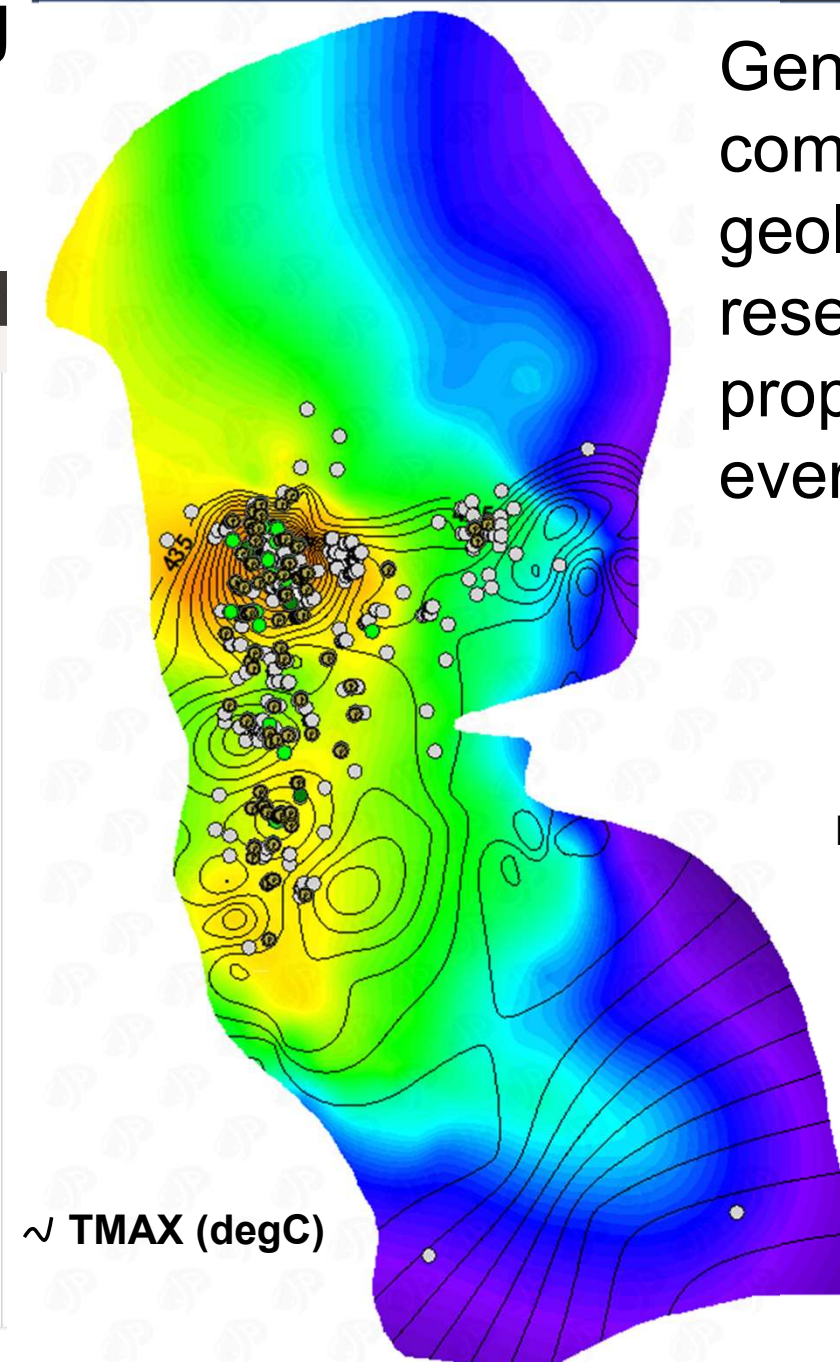
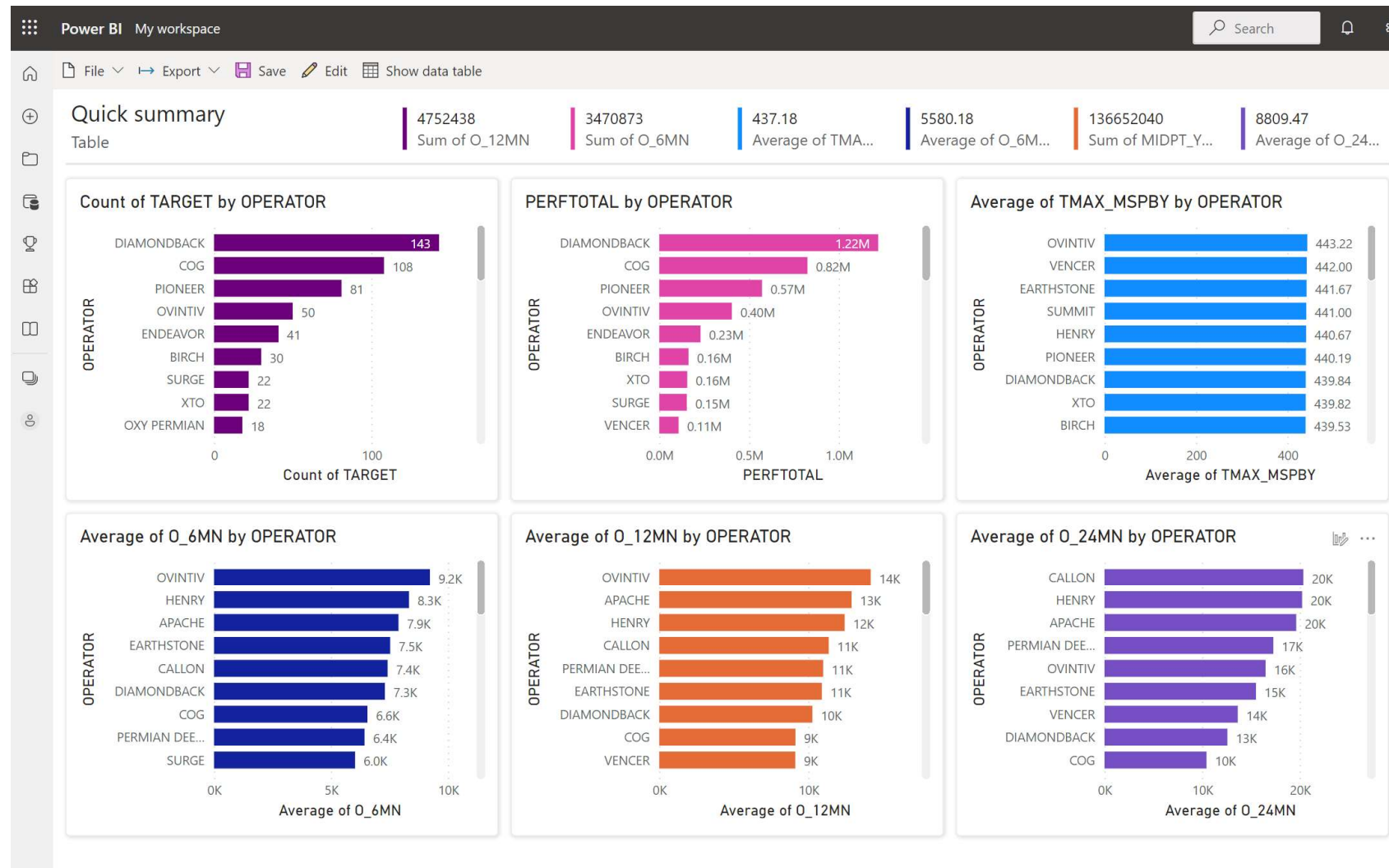
ACTIONABLE INTELEGENGE



Key geologic and reservoir properties are extracted at every horizontal well for screening production drivers and highlight step out opportunities.

Target Production Maps

Generate maps combining geology and reservoir properties in every target.



RESERVOIR PRESSURE (psi)

